

# 3DShooter

From shooting to finishing. **Polielettronica** has developed a complete set of equipment to realize a **true 3D print**. The results and the realism of the images produced is impressive. The technology can use the wide range of lenticular sheets available on the market. Prints and projects can be tuned perfectly to all available LPI.



The **3D Shooter** is a user-friendly equipment designed to create the set of images required for the lenticular artwork.

## Characteristics.

- The 3D Shooter can be managed like any professional photocamera.
- The 3D shooter is battery operating to allow full flexibility on the field, and can be fed by an external power supply (included) if necessary.
- The 3D shooter is easily managed by the touch pad through the SHOT MOBILE software, which calculates the spacing and the shooting angle for each frame required for a 3D layout.

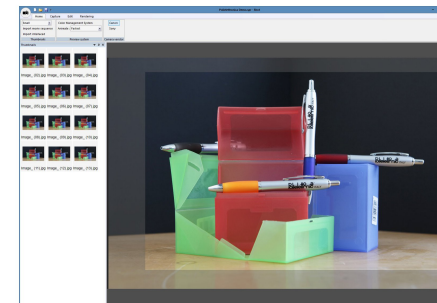
## Two shooting procedures are available:

- Automated sequence of single shots, suitable for still life, panoramas or non-animated objects.
- Fast frame from movie sequences, suitable for real life shooting: portrait, school photo, wedding. The set of frames is created in only 0.8 seconds!

**The SHOT software:** it's the perfect tool for managing and editing the 3D or lenticular composition.

Its license is included with the LaserLab HR3D

It can be installed on a laptop or a standard pc. It can drive the 3D Shooter directly, so it's possible to finalize a 3D image right after the shooting sequence is completed. The output size, the LPI sheet to be used and the cropping of the 3D layout can be easily defined. Every project can be re-opened and re-edited at any time in a few seconds. The position of the parallax can be changed to give to the final image the depth required or to change the point of focus of the composition.



**Polielettronica®**